

DEUX  
 SIMPHONIES  
 CONCERTANTES

Pour le Clavecin ou Forté Piano, et Harpe Obligée  
 avec un accompagnement de Violon ad Libitum.

DÉDIÉES  
 à Madame

COUPARD

PAR M. ADAM

ŒUVRE. I.

Gravée par G. Magnian.

Prix 7<sup>rs</sup> 4<sup>rs</sup>.

A PARIS.

Chez { l'Auteur, rue du temple, au coin de celle de Pastourelle, Chez M. Edelmann.  
 M<sup>me</sup> Le Marchand, rue Fromanteau, et à l'Opera.  
 et aux Adresses Ordinaires.

A . P . D . R .

L'accompagnement de Clavecin est après l'œuvre de madame  
 au Violon



## Harpe

## Symphonie I

*tutti* *Majestueux* *p* *f* *p* *f* *p*

*crce* *f* *p* *p* *f* *p* *f*

*f* *pp* *f*

*f* *Solo*

*p*



Harpe

3

This page contains a handwritten musical score for a harp, consisting of eight systems of two staves each (treble and bass clef). The notation includes various musical symbols such as notes, rests, accidentals, and dynamic markings. The dynamics *pf* (pianissimo), *p* (piano), *f* (forte), and *cres* (crescendo) are used throughout the piece. The score is written on aged, slightly discolored paper with a red border on the right side. The handwriting is in a historical style, and the notation includes many accidentals and slurs, indicating a complex and expressive piece of music.

*pf*

*I*

*I*

*p*

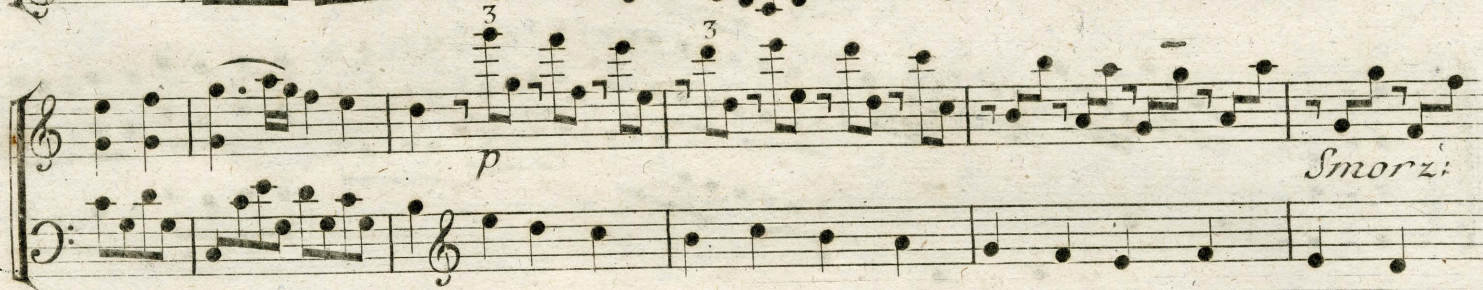
*cres*

*f*

*p* *f*

*f*



*Harpe*



Harpe

5

*Harpeggio*

*Sequens* - - -

*p* *f* *p*

*p* *cresc. f*

*f*



## Harpe

les regrets



Rondo





Harpe

7

Handwritten musical score for Harpe, page 7. The score consists of eight systems of two staves each. The notation includes various musical symbols such as treble and bass clefs, notes, rests, and dynamic markings. The piece concludes with a double bar line and a repeat sign.

System 1: Treble and Bass staves. Treble staff has a *FIN* marking. Dynamics include *p*.

System 2: Treble and Bass staves. Dynamics include *f*.

System 3: Treble and Bass staves. Dynamics include *f*, *p*, *p*, *p*, *f*, *p*, *f*.

System 4: Treble and Bass staves. Treble staff has *Smorz.* and *Sous Har.* markings. Bass staff has *p* and *f* markings. Ends with *D.C.* and *au Signe*.

System 5: Treble and Bass staves. Treble staff has *Minieur* marking. Dynamics include *p*, *f*, *p*, *f*.

System 6: Treble and Bass staves. Dynamics include *f*.

System 7: Treble and Bass staves. Dynamics include *p*, *cres*, *p*, *Smorz sonhar.* Ends with *D.C.* and *au signe*.



## Harpe

## Symphonie II.

*tutti*  
*f*  
*Modéré*  
*p*

*f*  
*p*

*Solo*  
*f*  
*p*

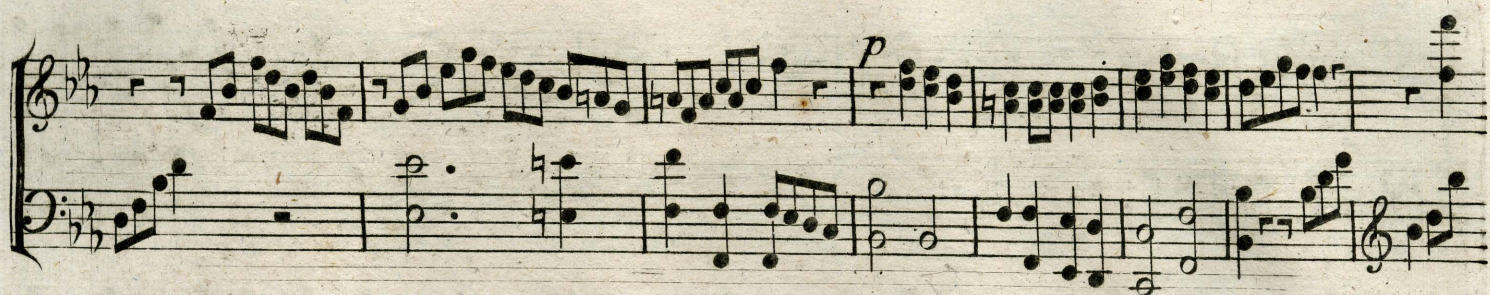
*f*

*3*



Harpe

9





## Harpe

Handwritten musical score for Harpe, page 10. The score consists of seven systems of two staves each (treble and bass clef). The music is in G major (one sharp) and 3/4 time. It features various musical notations including triplets, slurs, and dynamic markings such as *f* (forte), *p* (piano), and *cres* (crescendo). The bottom of the fifth system has a wavy line with the number 8 underneath it.



Harpe

II

This page contains a handwritten musical score for a harp, consisting of seven systems of two staves each (treble and bass clef). The music is written in a single key signature with two flats (B-flat and E-flat). The notation includes various note values, rests, and dynamic markings. The dynamics used are *p* (piano), *f* (forte), and *mp* (mezzo-piano). The score features several passages of rapid sixteenth-note runs, particularly in the treble staff of the first, second, and fifth systems. The piece concludes with a double bar line at the end of the seventh system.

System 1: Treble staff begins with a forte (*f*) dynamic and a rapid sixteenth-note run. Bass staff has a rest followed by a melodic line.

System 2: Treble staff begins with a piano (*p*) dynamic and a rapid sixteenth-note run. Bass staff has a rest followed by a melodic line.

System 3: Treble staff begins with a piano (*p*) dynamic and a melodic line. Bass staff has a rest followed by a melodic line.

System 4: Treble staff begins with a forte (*f*) dynamic and a rapid sixteenth-note run. Bass staff has a rest followed by a melodic line.

System 5: Treble staff begins with a piano (*p*) dynamic and a rapid sixteenth-note run. Bass staff has a rest followed by a melodic line.

System 6: Treble staff begins with a mezzo-piano (*mp*) dynamic and a rapid sixteenth-note run. Bass staff has a rest followed by a melodic line.

System 7: Treble staff begins with a forte (*f*) dynamic and a melodic line. Bass staff has a rest followed by a melodic line.



## Harpe

les tendres  
plaintes



Mouvement  
du  
Menuet





Harpe

13

Handwritten musical score for Harpe, page 13. The score consists of eight systems of two staves each. The music is in a key with two flats (B-flat and E-flat) and a common time signature. The notation includes various note values, rests, and dynamic markings such as *p* (piano), *f* (forte), and *cresc.* (crescendo). There are also markings for *da Capo* and *Majeur* (Major). The score ends with a double bar line and the marking *D.C. Majeur*.